

# HDSW

Dry pit  
Sea water ground  
pump

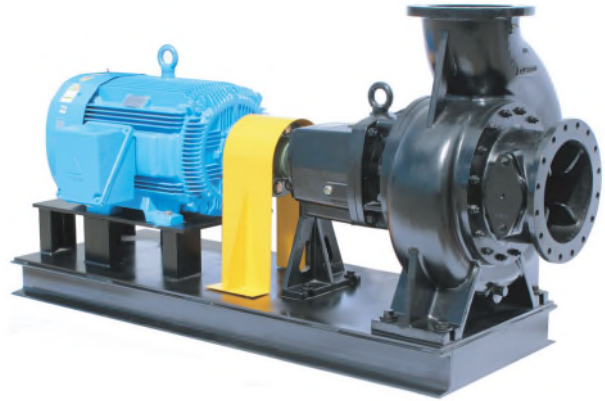
<b>Standard Material</b>	<b>Casing</b>	STS304
	<b>Shaft</b>	STS304
	<b>Impeller</b>	STS304
	<b>M/C Seal</b>	SIC/SIC

## Applications

Supply seawater at fish farming  
Circulation, drinking, water treatment, mining and industrial area

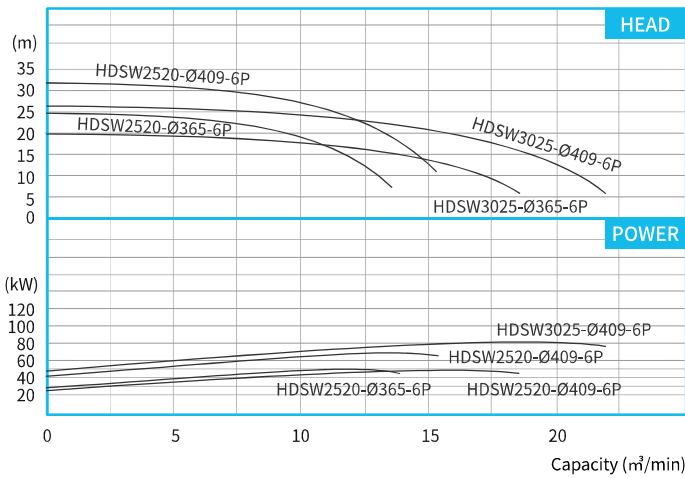
## Features

- Large capacity and various head
- Robust design and strengthen durability
- Stainless steel on hydraulic part for reinforce corrosion resistance

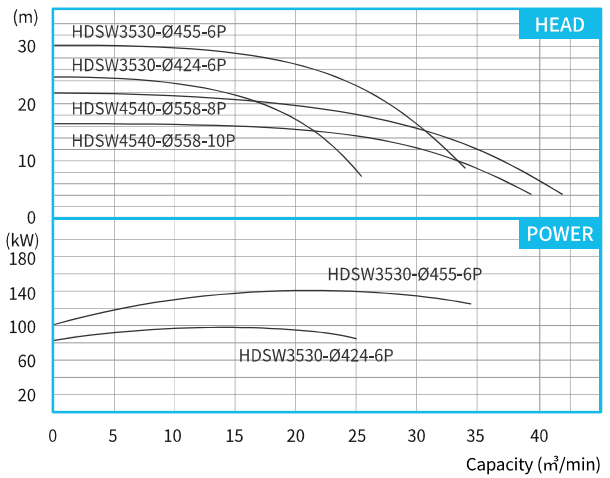


## Performance Curves

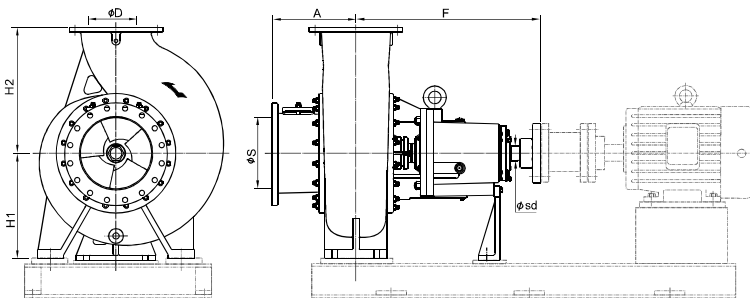
**HDSW2520/3025 (6 Poles)**



**HDSW3530/4540 (6-10 Poles)**



## Outline Drawing



Model	ØS	ØD	A	F	H1	H2	Øsd
HDSW2520	250	200	350	750	360	450	55
HDSW3025	300	250	385	875	400	500	70
HDSW3530	350	300	400	880	600	500	70
HDSW4540	450	400	450	1200	600	850	90

\* The above dimensions might be changed without further notification.